

CHARTER PARTY EDITOR

The CPE is a desktop-based application which is designed to facilitate the creation, modification, and management of charter party agreements for the maritime industry. It serves as a specialized tool for handling the complex documentation required for shipping contracts, ensuring efficiency, accuracy, and compliance with industry standards.

CPE protects:

- Original contract wordings
- Forms cannot be altered in any way
- All amendments are clearly visible

Designed for shipbrokers and their support staff, CPE is simple to use and quick to edit, saving you time and enabling you to work efficiently.

Over 90 electronic forms are available, approved and issued by recognized industry associations including ASBA, and NSA

Forms include:

- AFRICANPHOS1950
- AFRICANPHOS1950-MOROCCO
- AMWELSH79
- AMWELSH93
- ANVOY2K
- ANVOY99
- ASBACHEMVOY
- ASBATANKVOY
- ASBATIME
- Bal9moreFormC-(Steamer)1
- BEEPEEVOY3(House)
- BEEPEEVOY3(Tower)
- BEEPEEVOY4
- BEIZAI1991
- BHPTIME
- CONTIFIN
- CONTIVOY
- ECCACLAY
- EUROMED1983
- EUROMED1996
- EUROMED1997
- EUROMED2001
- Fertilizer Charter Party
- FERTIVOY88
- FLOTAMERCANTE
- FORMB1987
- GRAINVOY
- GRAINVOYBILL
- IMOL78
- KLAVTIME92
- KLAVTIME96
- LDCCG
- LOMOL94
- LONDON
- MAURITANIAN ORE 2000
- MAURITANORE 1988
- MAURITANORE 62
- NIPPONSALE 1977
- NIPPONSALE 1993
- SUGAR87
- SUGAR99
- SYNACOMEX2000
- SYNACOMEX74
- SYNACOMEX90
- TEXACOVYOY94 ...

Our Services

Fleet Management Software

- Planned Maintenance
- Procurement Management
- Safety Management
- Crew Management
- Rest Hour
- Document & Forms
- Risk Assessment
- Voyage Monitoring
- Environment Management
- Dry Dock

Shipbroker Software

- Charter Party Editor
- Matrix Group Email

Consultancy Services

- Vessel Database Solutions
- Fuel & machinery optimisation (vessel telematics)
- Tanker Management Self-Assessment
- Cyber Security
- Data Analysis Reports & Dashboards
- Customised Development
- Legacy Software Modernisation
- Bespoke Mobile Apps
- Outsourced Development Resources
- API Integration Services

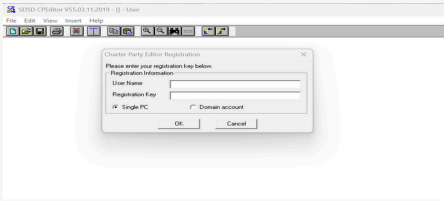
SDSD fleet management software is used by ship managers and owners globally, across all fleet types including tanker, bulk carrier and offshore. Find out more about how SDSD software can improve your vessel performance..

KEY FEATURES

CPE Admin

- Provides all necessary user information, including clients, users, groups, products, copyright owners, sales, licenses, geographic zones, credit logs, and client credit logs. Administrators can perform backend administrative tasks

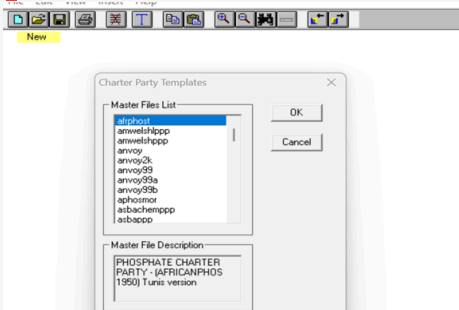
Registration Process



CPE utilizes three modes of registration:

- Single PC Registration: Restricts access to a single device
- Domain-based Registration: Grants access across a specific network or domain
- Site License Registration: Allows broader access within an organization

Drafting New Form

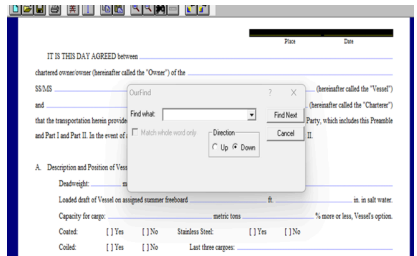


- Create new form with the available template

Edit Function

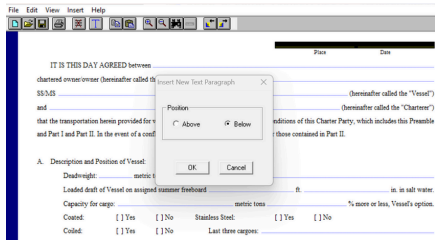
- Documents Editing: Protects original contract wording and displays amendments.
- Aligning: Enables positioning of text to the center or to the right.
- Find: Allows searching for specific characters or text within a selected line of documents.
- Edit Display Text Size: Permits user-specific text size adjustment.
- Strike Thru: Applies a strikethrough to selected text.
- To access these editing functions, click on **Edit** at the top left corner.

Find Function



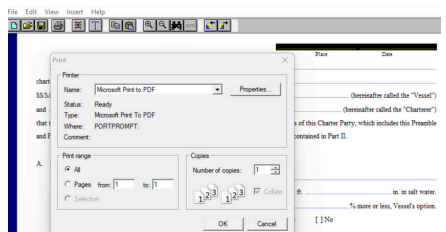
- Search for specific characters or text within a selected line of documents.

Insert Function



- Insert a paragraph above or below a particular text line. To access, click the **Insert** button at the top left of the CPE.

Print Function (pay-per-print)



- Users are charged credits after each final print.
- Printing is enabled with the installation of the CPE printer (typically the HP LaserJet 4100 series).

Find out more about how SDSD software and services.

Contact Us



UK: +4420 35886740
UAE: +971 58 834 7463
Creece: +30 21 1198 4479

Indonesia: +6282145732154
Singapore: +6531587545



www.sdsd.com
sales@sdsd.com



+65 9356 4863